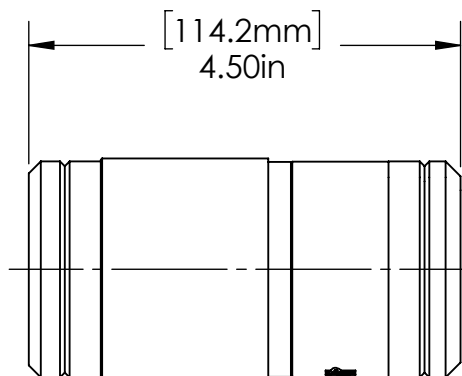
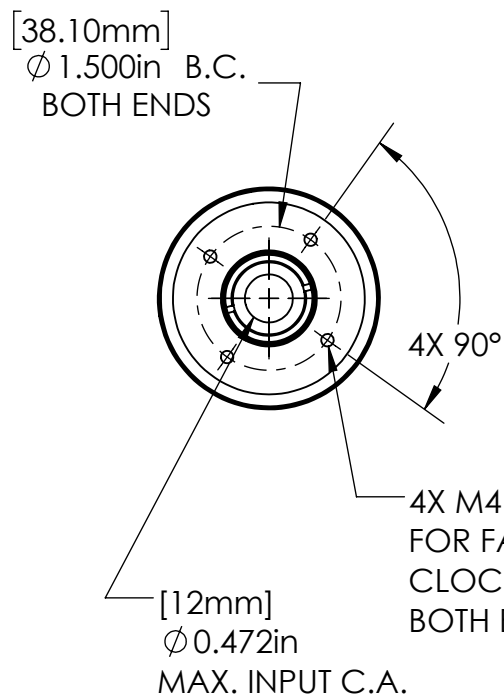


EXAMPLE PART NOS.:

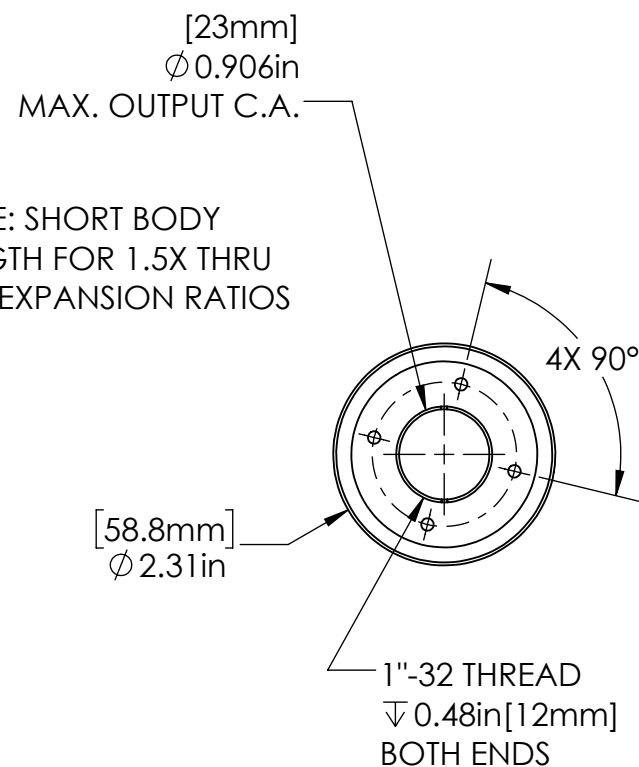
BEC-19-2.0-10.6: Laser Beam Expander/Collimator, 19mm Series, 2X Expansion Ratio, for use at 10.6μm, Short Body.


BEC-19-2.0-1064: Laser Beam Expander/Collimator, 19mm Series, 2X Expansion Ratio, for use at 1064-1070nm, Short Body.

Contact Haas LTI with your BEC-19 requirement.



NOTE: SHORT BODY LENGTH FOR 1.5X THRU 3.0X EXPANSION RATIOS



| | | | | | | | | | | | |
|--|------------------|-----------------|------------------|---|------|-------------|------|------|---|--|------------|
| FOR INFORMATION ONLY NOT FOR MANUFACTURING | DATE: 6/22/16 | DRAWN BY: TA | CHK'D BY: GJH | TOLERANCES: (EXCEPT AS NOTED) | REV. | DESCRIPTION | DATE | APPD |  | 37 IRONIA ROAD FLANDERS NJ 07836 (973) 598-1150 Fax: 598-1151 | |
| HAAS DOC.# BEC-19-2.0-10.6-S-SALES | | | | X.XXX= ± 0.005 X.XX= ± 0.01 X/X = ± 1/64 ANGULAR: ± 0.5° | | | | | | | |
| \\haas-server\Engineering\salesengineering\TimWebsite16\19mm\BEC-19\BEC-19-2.0-10.6-S\ | | | | | | | | | BEC-19 2.0X BEAM EXPANDER/ COLLIMATOR - SHORT BODY LENGTH | | BOM# |
| | | | | | | | | | | | SCALE: 1:2 |