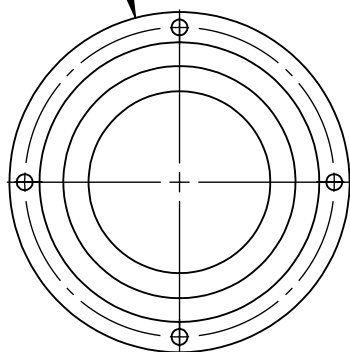
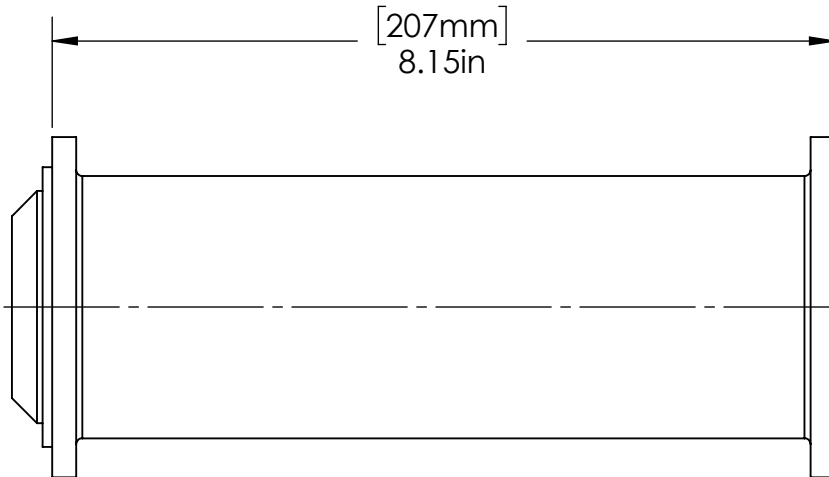


[90mm]  
Ø 3.54in

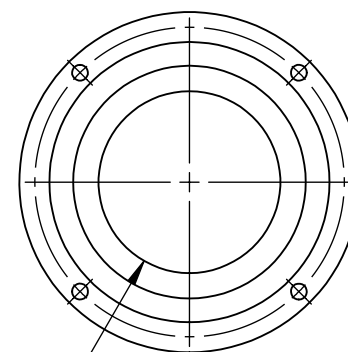



[207mm]  
8.15in



[48.1mm]  
Ø 1.89in

CLEAR APERTURE



FOR INFORMATION ONLY NOT FOR MANUFACTURING	DATE: 9/07/2017	DRAWN BY: TA	CHK'D BY: GJH	TOLERANCES: (EXCEPT AS NOTED)	REV.	DESCRIPTION	DATE	APPD		37 IRONIA ROAD FLANDERS NJ 07836 (973) 598-1150 Fax: 598-1151
HAAS DOC.# G4-50-BEM-3029-300-SALES				X.XXX= ± 0.005 X.XX= ± 0.01 X/X = ± 1/64 ANGULAR: ± 0.5°						
\\haas-server\Engineering\salesengineering\HaasWebsite16\FiberLaserTree\50mm\BaseExtMod\G4-50-BEM-3029-300\									G4-50-BEM-3029-300 BASE EXTENSION MODULE	
									BOM#	
									SCALE: 1:2	