

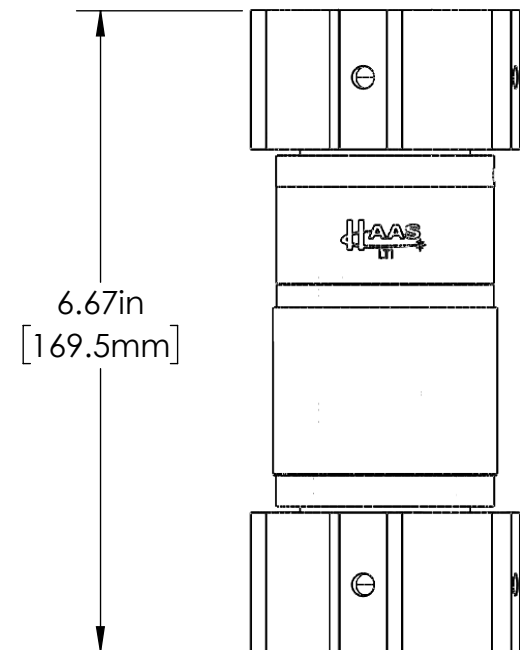
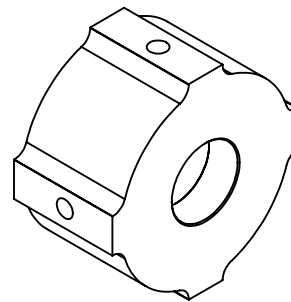
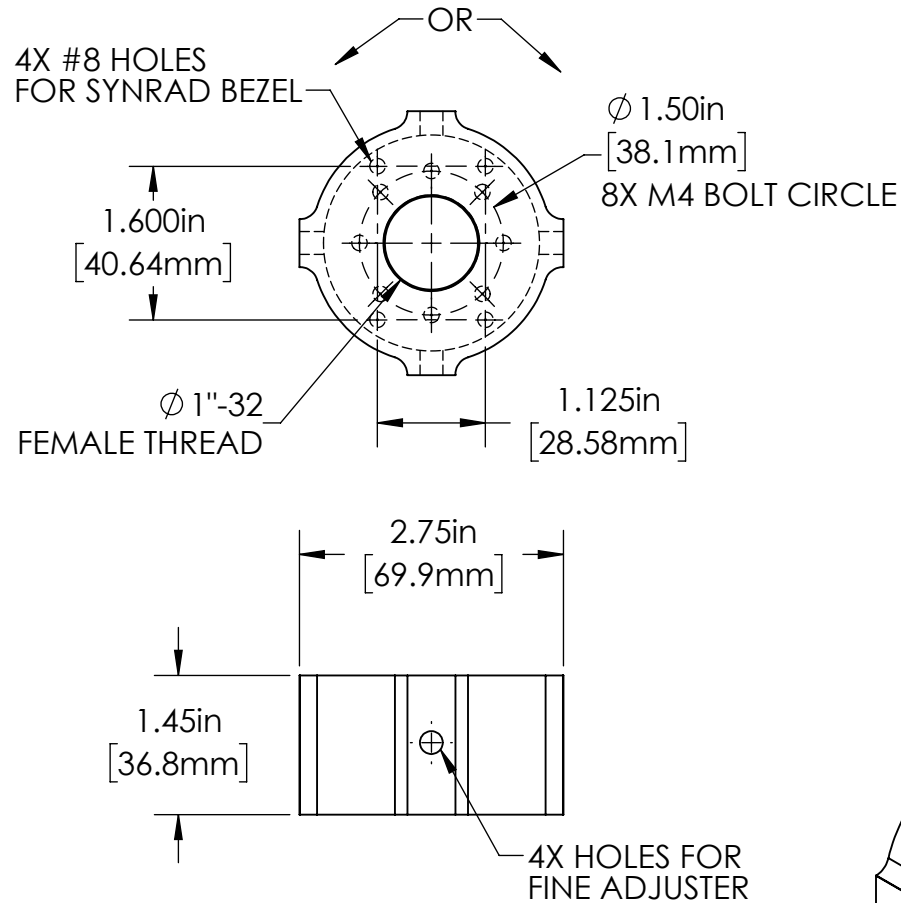
## PART NUMBER EXAMPLES:


**TM-19-S-C:** Translational Mount, 19mm Series, Standard, 1"-32 Thread Only

**TM-19-S-H:** Translational Mount, 19mm Series, Standard, 1.5" Bolt Circle

**TM-19-S-S:** Translational Mount, 19 mm Series, Standard, Synrad Bezel

Note: **There is Approx 2.2" Increase in Overall Height of the BEC-19-X.X-XXXX Assy with the Use of TM-19-X-X**



FOR INFORMATION ONLY NOT FOR MANUFACTURING	DATE: 9/14/2016	DRAWN BY: SG	CHK'D BY: GJH	TOLERANCES: (EXCEPT AS NOTED)	NO.	REVISIONS	DATE	APPD		37 IRONIA ROAD FLANDERS NJ 07836 (973) 598-1150 Fax: 598-1151
HAAS DOC.# TM-19-X-X-SALES				X.XXX= ± 0.005 X.XX= ± 0.01 X X/X = ± 1/64 ANGULAR: ± 0.5°						
SPECIFICATIONS SUBJECT TO CHANGE WITHOUT NOTICE. CONTACT HAAS LTI FOR MORE INFORMATION									TM-19 TRANSLATION MOUNT FOR LASER BEAM EXPANDER/COLLIMATOR	BOM#
										SCALE: 1:2